

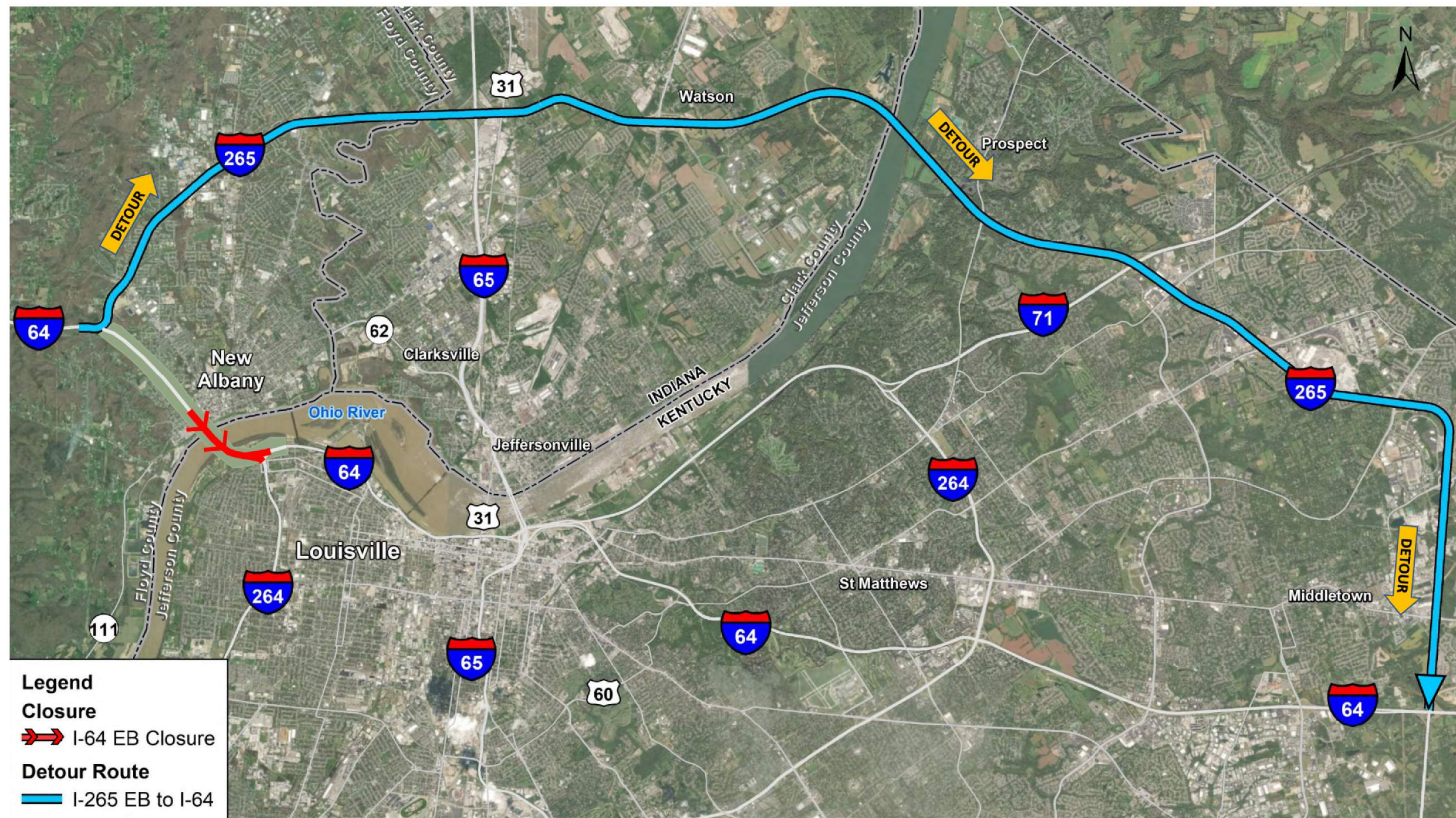


MATCHLINE STRIP MAP 13

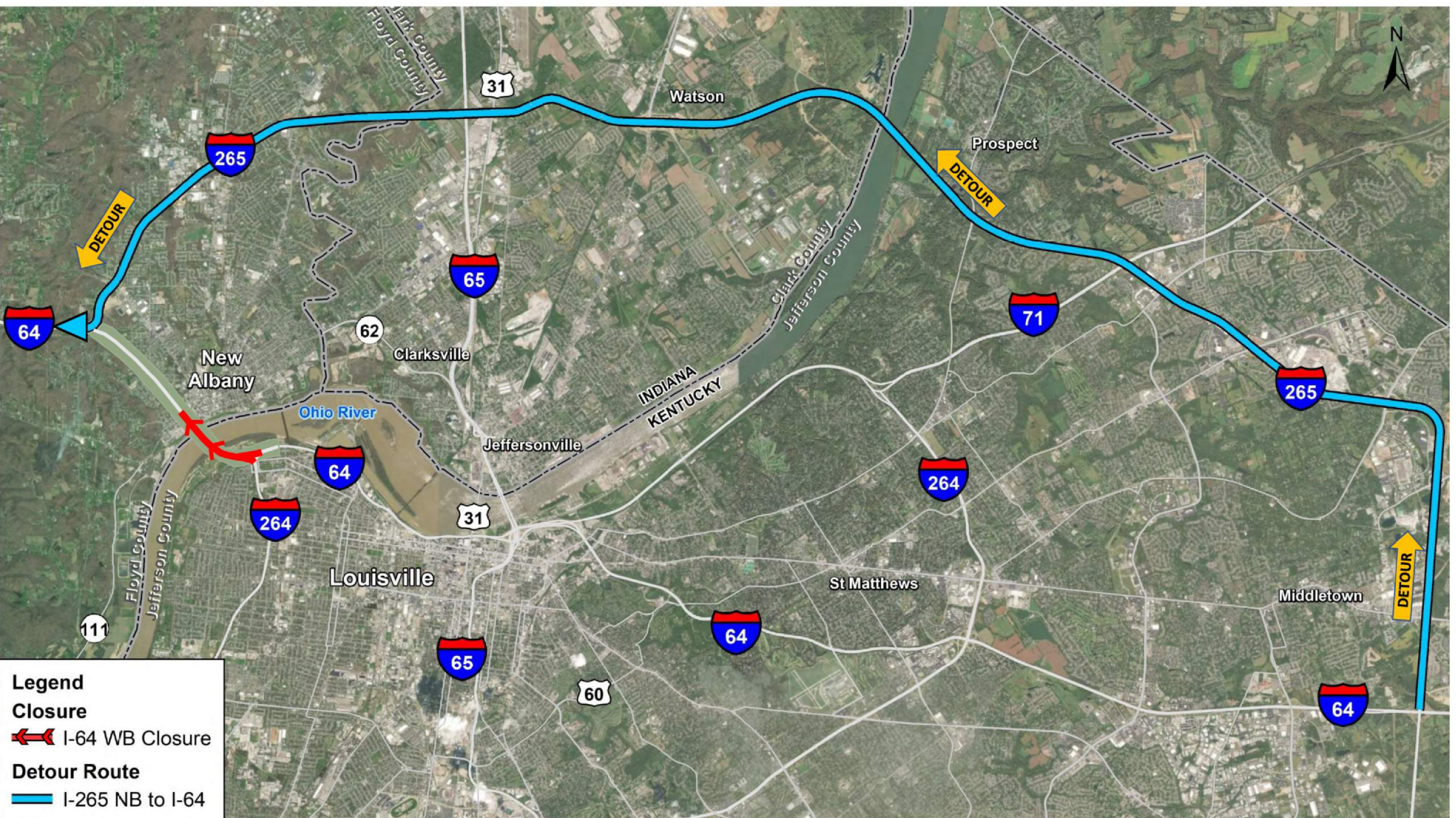
- Notes:
- Two westernmost lanes are closed on I-64 WB for upper deck structure and pavement rehabilitation.
  - Two lanes of I-64 EB and one I-64 WB express lane shall be maintained on the EB roadway (lower deck).
  - One I-64 WB lane shall be maintained on the WB roadway (upper deck)
  - Temporary concrete barrier must separate the WB express lane from the EB lanes.
  - Existing rumble strips removed in Phase 3.
  - WB Counter Flow Express Lane to utilize temporary crossover constructed in Phase 3 to EB roadway. Temporary pavement for crossover constructed in Phase 1.
  - See Strip Map 04 for additional advance warning signs. Additional temporary signage will be evaluated per Section 12 of the ITP and included during final design.

LEGEND			
Construction	Full-Depth Shoulder Strengthening	Temporary Traffic Drums	Temporary Pavement Markings
Existing	Shoulder Strengthening/ Rumble Strip Removal	Temporary Concrete Barrier	
Completed Construction	Temporary Crossover		

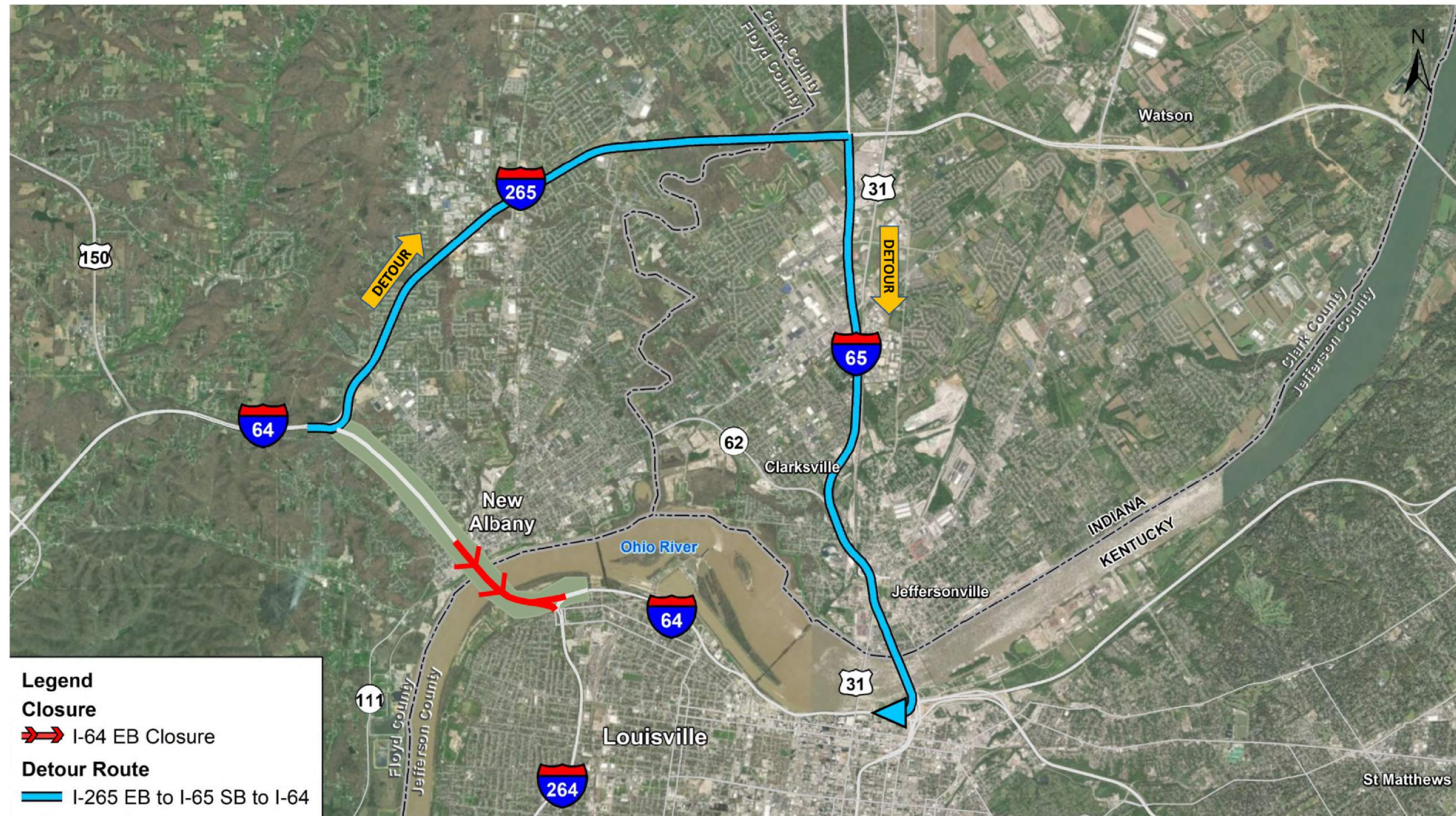




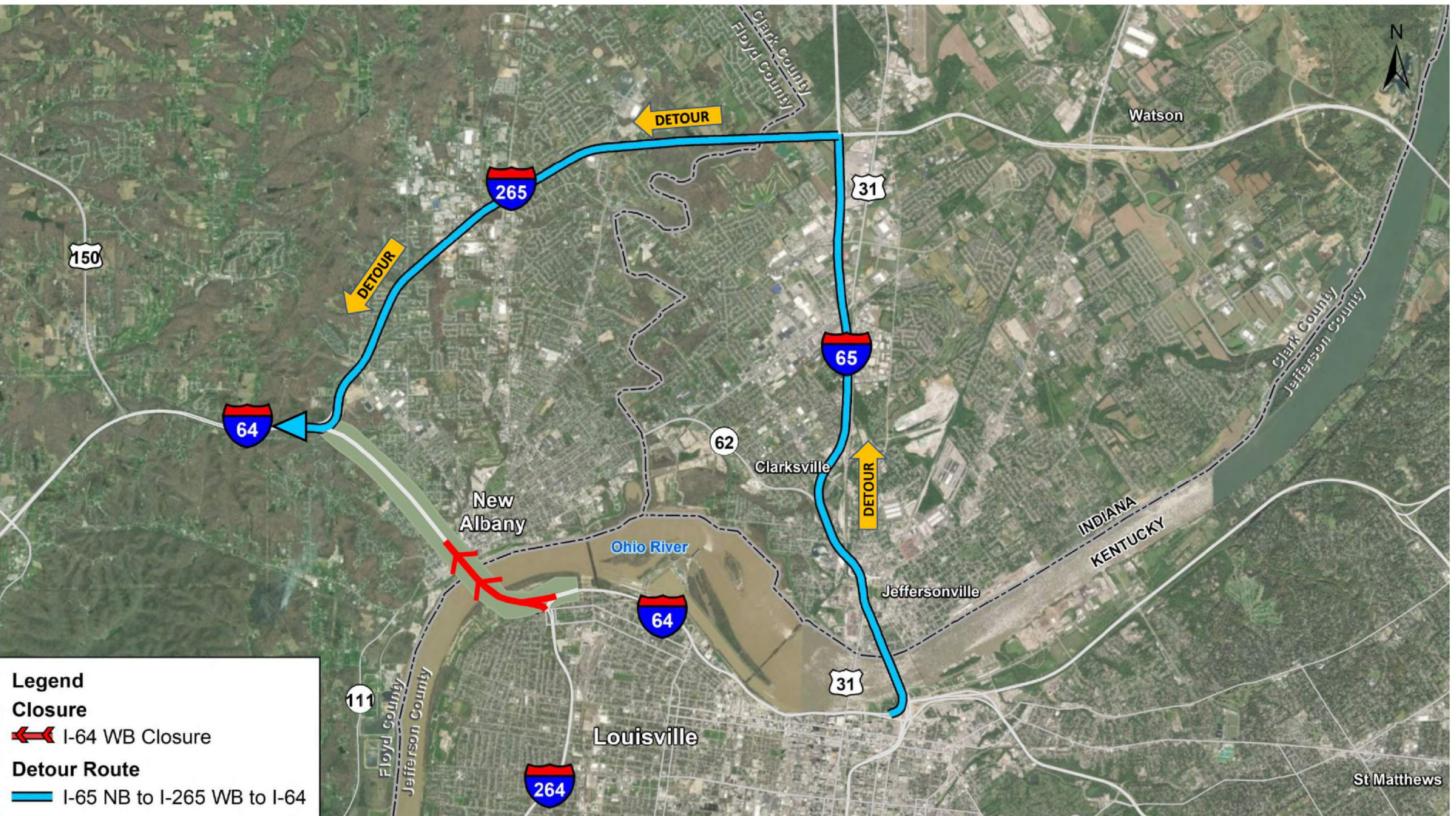
Detour: I-64 EB Bridge Closure (Option 1)  
-Use detour to bypass city of Louisville and connect back to I-64 EB  
-Local New Albany access to use I-64 EB/WB between I-265 and Spring Street



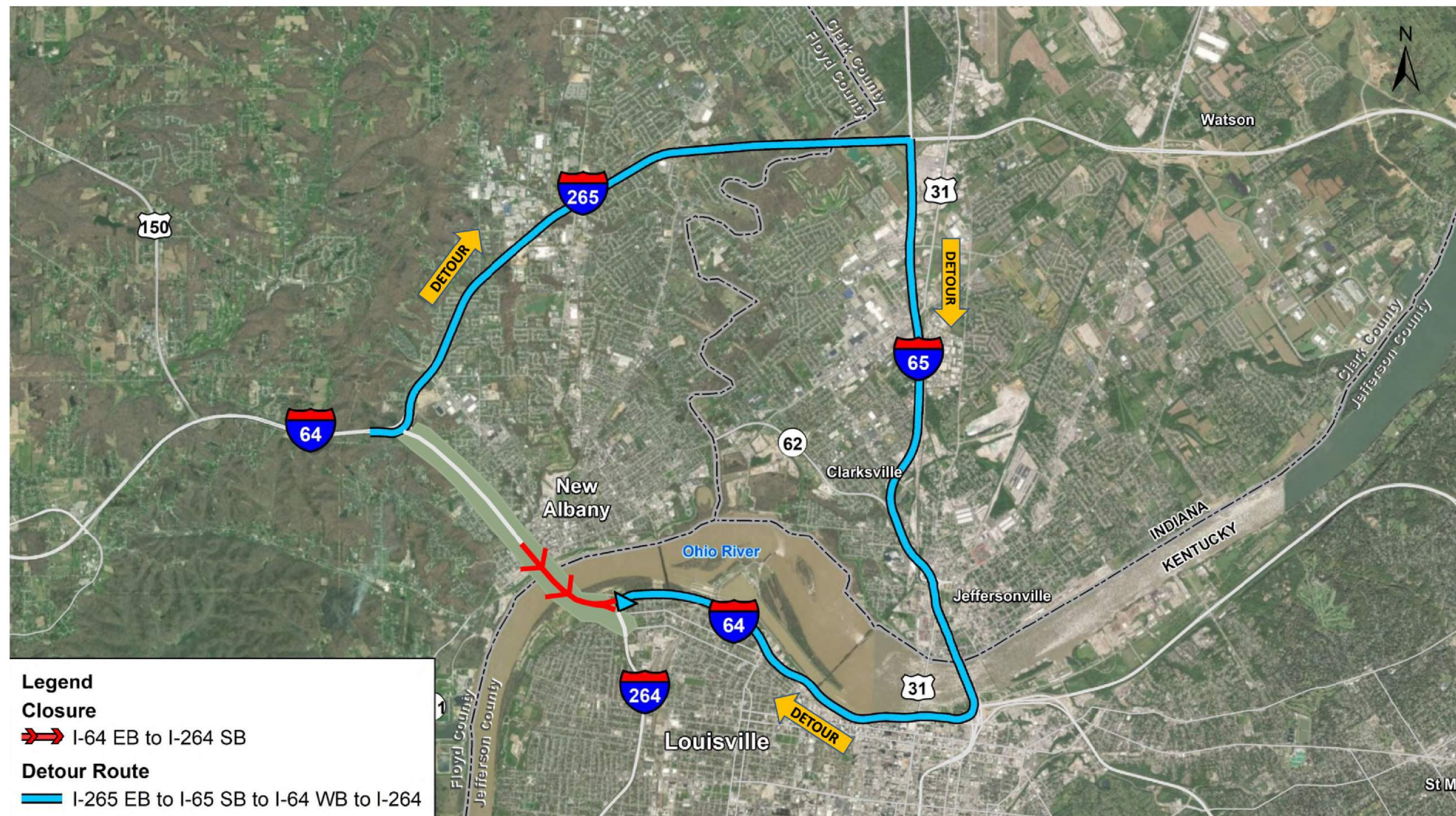
Detour: I-64 WB Bridge Closure (Option 1)  
-Use detour to bypass city of Louisville and connect back to I-64 WB  
-Local New Albany access to use I-64 EB/WB between I-265 and Spring Street



Detour: I-64 EB Bridge Closure (Option 2)  
-Use detour to access Downtown Louisville and I-65 SB  
-Local New Albany access to use I-64 EB/WB between I-265 and Spring Street



Detour: I-64 WB Bridge Closure (Option 2)  
-Use detour if coming from Downtown Louisville or I-65 NB and connecting to I-64 WB  
-Local New Albany access to use I-64 EB/WB between I-265 and Spring Street



Detour: I-64 EB Bridge Closure (Option 3)  
-Use detour to access I-264 SB  
-Local New Albany access to use I-64 EB/WB between I-265 and Spring Street



Detour: I-64 WB Bridge Closure  
-Use detour for I-264 NB traffic to access I-64 WB north of Ohio River  
-Local New Albany access to use I-64 EB/WB between I-265 and Spring Street

Local Access Note:  
During allowable closure periods of the Sherman Minton Bridge, I-64 between I-265 and Spring Street to remain open for New Albany local traffic only. Vehicles traveling south into New Albany on I-64 will exit at Spring Street. Vehicles traveling north out of New Albany will enter I-64 at Spring Street. NB and SB State Street is secondary detour route in and out of New Albany when the bridge is closed.